

Tangent "L" Bracket Stirrup

Construction

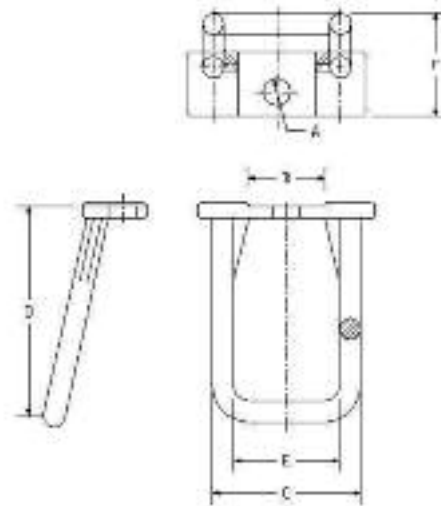
The Tangent ("L") Bracket Stirrup is made of hot dipped galvanized nodular steel.

Features

- Corrosion resistant
- Optimally shaped to provide high strength and to maintain optimum cable configuration
- Enable conductor support at structure and use of anti-sway bracket
- Attachment hardware provided

Application

The Tangent ("L") Bracket Stirrup is installed directly on the Tangent "L" Bracket to support a cable spacer directly at the utility pole. It can be used in conjunction with an anti-sway bracket to restrain the movement of the conductors.



Southwire Stock #	Description	Hendrix Cat. #	Dimensions (in)						Minimum Ultimate Strength (lbs)	Weight (lbs)
			A	B	C	D	E	F		
64991501	Tangent Bracket Stirrup	TS-1	0.7	2.0	3.8	5.8	2.75	2.7	900	1.6