

Transformer Tap Bracket

Construction

The Transformer Tap Brackets is manufactured from hot rolled steel structural channel shapes that are cold formed and welded to the proper shape and are braced to provide added strength. The brackets are hot dipped galvanized to provide excellent corrosion resistance.

Features

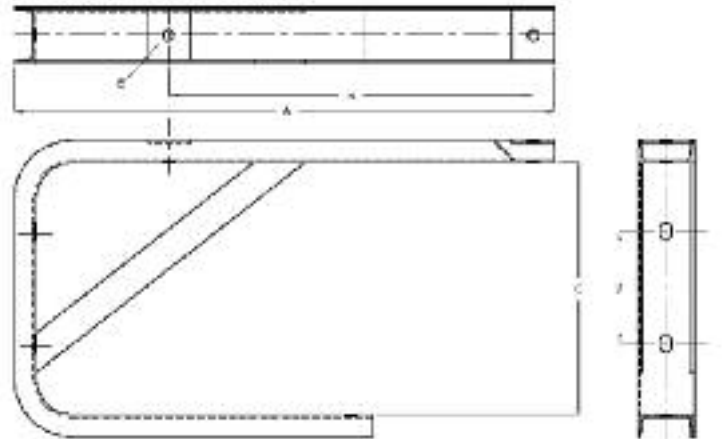
- Manufactured from high-strength structural steel channel
- Excellent corrosion resistance
- Provides increased Covered Aerial MV cable spacing to facilitate operations

Application

The Transformer Tap Brackets are designed to support a single circuit, Covered Aerial MV cable system at the point where the cable is being tapped for termination with a transformer or other device. The bracket will maintain the orientation of the Covered Aerial MV cable system while providing increased separation of the phases allowing greater working clearance for operation personnel. The bracket may be used at any point in the line where the angle upon entry and exit of the cable is less than 60 degrees and it is compatible and interchangeable with other manufacturers' components.

Specification

ASTM 153



Southwire Stock #	Description	Hendrix Cat. #	Dimensions (in)					System Voltage (kV)	Weight (lbs)
			A	B	C	D	E		
64976101	Transformer Tap Bracket	BT3-35	38.5	26.0	18.0	8.0	13/16	Up to 46	52