

Pole Extensions- > 30"

Construction

The 60" and 75" Pole Top Extensions are manufactured from 4" structural steel channels and 2" angle iron. The extensions are hot dipped galvanized to provide superior corrosion resistance. Holes are drilled on 8" centers to correspond to standard pre-drilled pole hole spacings.

Features

- Manufactured from high-strength structural steel
- Superior corrosion resistance
- Pre-drilled for use on standard utility poles
- Used to provide additional pole height to allow for the installation of Covered Aerial MV circuits to existing pole lines
- The high-strength variations are available where double circuit or higher circuit loadings need to be accommodated. Two straight structural steel channel sections are used (not shown)

Application

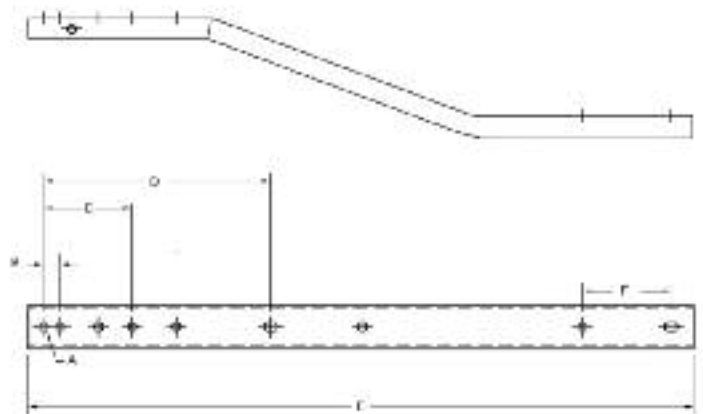
The 60" and 75" Pole Top Extensions are designed to support additional Covered Aerial MV circuits on an existing pole routing. They are designed for use on both tangent and angle structures and will provide an additional 48" to 65" of clearance for the line.

Specification

ASTM A 153



Pole Top Extension



Southwire Stock #	Description	Hendrix Cat #	Dimensions (in)						Weight (lbs)
			A	B	C	D	E	F	
64997201	Pole Top Extension, 60"	XPT-60	13/16	1.5	8.0	20.5	60.0	8.0	41.5
64997301	Pole Top Extension, High Strength 60"	XPT-60H	13/16	1.5	8.0	20.5	60.0	8.0	56.0
64997401	Pole Top Extension, 75"	XPT-75	13/16	1.5	8.0	20.5	75.0	8.0	55.0
64997501	Pole Top Extension, High Strength 75"	XPT-75H	13/16	1.5	8.0	20.5	75.0	8.0	69.0