

Pole Extensions- 30"

Construction

The 30" Pole Top Extension is manufactured from 4" structural steel channel and is hot dipped galvanized to provide superior corrosion resistance. Holes are drilled on 8" centers to correspond to standard pre-drilled pole hole spacings.

Features

- Manufactured from high-strength structural steel
- Corrosion resistant
- Drilled for use on standard utility poles
- Used to provide additional pole height to allow for the installation of an additional Covered Aerial MV cable circuit to the pole line.

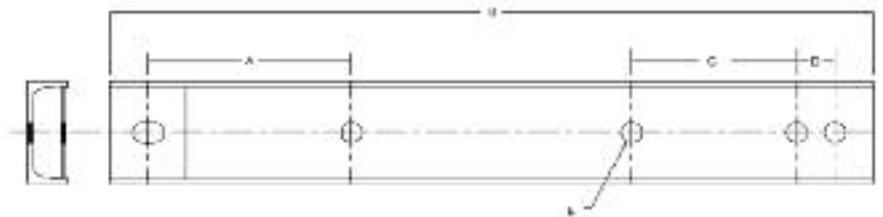


Application

The 30" Pole Top Extension is designed to support a Covered Aerial MV cable circuit on an existing pole routing where additional clearance from existing conductors is needed. It is designed for use on both tangent and angle structures and will provide up to an additional 18" of clearance for the line.

Specification

ASTM A 153



Southwire Stock #	Description	Hendrix Cat. #	Dimensions (in)					Weight (lbs)
			A	B	C	D	E	
64997101	Pole Top Extension, 30"	XPT-30	8.0	30.0	6.5	1.5	13/16	16.0