

Construction

Polymeric insulator is injection molded from grey track resistant high-density polyethylene. The insulator is designed to be installed using hand wrapped ties or PREFORMED™ ties.

Features

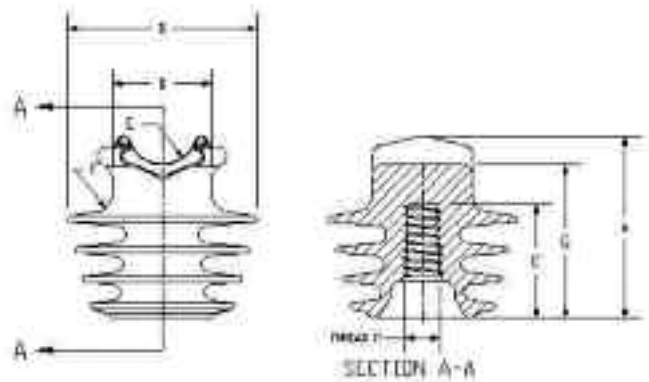
- Dielectrically compatible with Southwire polyethylene covered conductors or other polyethylene covered conductors
- Insulator is molded from grey track resistant polyethylene compound
- UV resistant
- Lightweight and shatter resistant

Application

The polymer insulator is used in 15 kV overhead distribution lines with bare or covered conductors. The insulator was developed to meet the electrical, mechanical and environmental parameters typical of overhead distribution lines.

Specification

ANSI C29.1
ANSI C29.5



Southwire Stock #	Description	Hendrix Cat #	Nominal ANSI Class	Neck Style
64950701	15kV Polymer Pin Insulator, Tie Type C-neck	HPI-15	55-3	C
64987701	15kV Polymer Pin Insulator, Tie Type F-neck	HPI-15F	55-4	F

* Similar to ANSI C-neck

Southwire Stock #	64950701	64987701
Description	15kV Polymer Pin Insulator, Tie Type C-neck	15kV Polymer Pin Insulator, Tie Type F-neck
Hendrix Cat. No.	HPI-15	HPI-15F
ANSI Class	55-3	55-4
Leakage Distance (in)	14.5	14.5
Dry Arcing Distance (in)	6.3	6.3
Pin Hole Diameter (in)	1	1
Minimum Pin Length (in)	6	6
60 Hz Dry Flashover, kV	92	93
60 Hz Wet Flashover, kV	53	50
Positive Impulse Flashover, kV	127	147
Negative Impulse Flashover, kV	134	201
Low Frequency Puncture, kV	176	160
RIV @ 1 MHz		
10 kV to grd, μV	< 5	< 5
15 kV to grd, μV	N/A	N/A
22 kV to grd, μV	N/A	N/A
Cantilever Strength (lbs.)	3000	3000
Dimensions (in)		
A	4.9	5.1
B	5.5	5.5
C	3.25	3.25
D	2.25	2.875
E	0.67	1.0
F	0.625	0.625
G	4.3	4.4
Weight (lbs.)	1.2	1.3
Neck Style	C	F
Max. continuous conductor	120	120
Operating Temp. deg. C		