

# E-LOC & E-LOC TRANSITION COUPLINGS

E-LOC  
COUPLINGS



E-LOC  
TRANSITION  
COUPLINGS



---

## APPLICATIONS

---

- The E-Loc Coupling is a compression coupling that provides a watertight/airtight connection in buried, or restrained applications. The ability to join dissimilar materials, such as PVC, HDPE, fiberglass, or metal, makes the E-Loc a versatile coupling for the telephone, electrical, and cable industries. Patented.
- E-Loc Couplings are available to fit conduit sizes from 3/4" through 4". Easy to install without the need for additional tools or equipment. Watertight to 200 psi restrained on smooth wall conduit. Also seals on ribbed and corrugated duct. Custom lengths and non-standard IPS diameters are available. Allows for transitions between different materials with one coupling.
- E-Loc Transition Couplings have all the great features of an E-Loc Coupling while providing a transition from one size conduit to another. This includes the ability to transition to dissimilar materials such as PVC, HDPE, fiberglass, and metal. Allows for transitions between different sizes and materials with one coupling.

---

## PRODUCT DETAILS

---

- Can join ducts made from dissimilar materials
- Can withstand 200 psi restrained on smooth wall conduit
- Size range from 3/4" through 4"
- Transitions between sizes available
- No additional tooling required for installation

---

**Watertight/Airtight  
Connection**

---

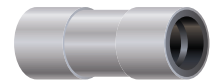
**Ability to Join  
Dissimilar Materials**

---

**Easy Installation**

---

**Custom Lengths and  
Non-Standard IPS  
Diameters Available**



**CONDUIT  
ACCESSORIES**

E-LOC & E-LOC TRANSITION COUPLINGS

**E-LOC COUPLINGS**

<b>WEIGHTS, MEASUREMENTS, AND PACKAGING</b>						
<b>REFERENCE</b>	<b>NOMINAL SIZE (inch)</b>	<b>STANDARD DUCT SIZE</b>	<b>COUPLING BODY O.D. (inch)</b>	<b>LENGTH (inch)</b>	<b>PIECES PER CARTON</b>	<b>WEIGHT PER CARTON (lbs)</b>
EL-105	0.750	1.050" 3/4" IPS	1.315	4.500	100	28
EL-131	1.000	1.315" 1" IPS & SCH 40	2.000	5.250	50	23
EL-166	1.250	1.660" 1.25" IPS	2.400	5.250	50	28
EL-190	1.500	1.900" 1.5" IPS	2.650	6.000	25	19
EL-237	2.000	2.375" 2" IPS	3.170	6.000	25	25
EL-287	2.500	2.875" 2.5" IPS	3.500	6.000	24	46
EL-350	3.000	3.500" 3" IPS	4.500	6.000	18	38
EL-350-8	3.000	3.500" 3" IPS x 8" LG	4.500	8.000	12	42
EL-350-12	3.000	3.500" 3" IPS x 12" LG	4.500	12.00	12	50
ELR-350	3.000	3.500" REPAIR SLEEVE	4.500	6.000	18	38
EL-400	4.000	4.500" 4" IPS	5.563	6.000	12	34

\*Standard coupling length is 6" unless noted otherwise.

**E-LOC TRANSITION COUPLINGS**

<b>DESCRIPTIONS</b>	
<b>REFERENCE</b>	<b>DESCRIPTION</b>
ELA-166105	CPLG, E-LOC TRANS 1.660" x 1.050"
ELA-166131	CPLG, E-LOC TRANS 1.660" x 1.315"
ELA-190131	CPLG, E-LOC TRANS 1.900" x 1.315"
ELA-190166	CPLG, E-LOC TRANS 1.900" x 1.660"
ELA-237131	CPLG, E-LOC TRANS 2.375" x 1.315"
ELA-237166	CPLG, E-LOC TRANS 2.375" x 1.660"
ELA-237190	CPLG, E-LOC TRANS 2.375" x 1.900"
ELA-287237	CPLG, E-LOC TRANS 2.875" x 2.375"
ELA-350190	CPLG, E-LOC TRANS 3.500" x 1.900"
ELA-350237	CPLG, E-LOC TRANS 3.500" x 2.375"
ELA-350287	CPLG, E-LOC TRANS 3.500" x 2.875"
ELA-450237	CPLG, E-LOC TRANS 4.500" x 2.375"
ELA-450287	CPLG, E-LOC TRANS 4.500" x 2.875"
ELA-450350	CPLG, E-LOC TRANS 4.500" x 3.500"

# DOUBLE E-LOC & DOUBLE E-LOC TRANSITION COUPLINGS

DOUBLE E-LOC  
COUPLINGS



DOUBLE E-LOC  
TRANSITION  
COUPLINGS



---

## APPLICATIONS

---

- The Double E-Loc is a locking compression coupling used to join smooth, ribbed, corrugated or Figure 8 High Density Polyethylene (HDPE) conduit. The locking, pressure-tight design makes the Double E-Loc an ideal coupling for pneumatic cable placing applications when air and watertight integrity of the system is imperative. Unmatched pressure ratings, pull-out resistance, no metal parts, and no special tools make the Double E-Loc the preferred coupling. Lock rings specially designed to grip rigid PVC and steel pipe are also available.
- Double E-Loc Transition Couplings have the same great features as the Double E-Loc Couplings, but provide the ability to connect conduit of different sizes. Lock rings designed to grip PVC and steel allow for a single coupling to transition to both a dissimilar size and dissimilar material.

---

## PRODUCT DETAILS

---

- Can withstand 200 psi internal pressure
- Provide pull-out resistance in excess of ASTM standards for HDPE
- Sizes from 3/4" to 2" available
- No additional tools required for installation

---

**Locking Compression  
Coupling**

---

**No Special Tools  
Required**

---

**Sizes 3/4" to 2"**



**CONDUIT  
ACCESSORIES**

**DOUBLE E-LOC COUPLINGS**

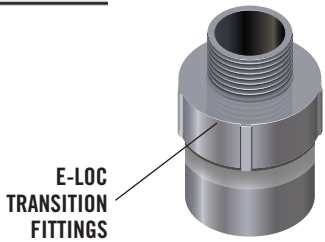
<b>WEIGHTS, MEASUREMENTS, AND PACKAGING</b>					
<b>REFERENCE</b>	<b>NOMINAL SIZE (inch)</b>	<b>STANDARD DUCT SIZE</b>	<b>LENGTH (inch)</b>	<b>PIECES PER CARTON</b>	<b>WEIGHT PER CARTON (lbs)</b>
DEL-131	1.000	1.315" O.D. DUCT (1" IPS)	6.250	50	63
DEL-166	1.250	1.660" O.D. DUCT (1.25" IPS)	6.250	50	48
DEL-190	1.500	1.900" O.D. DUCT (1.5" IPS)	8.250	25	32
DEL-237	2.000	2.375" O.D. DUCT (2" IPS)	8.500	25	51

**DOUBLE E-LOC TRANSITION COUPLINGS**

<b>MEASUREMENTS AND PACKAGING</b>			
<b>REFERENCE</b>	<b>TRANSITION SIZE O.D.</b>		<b>PIECES PER CARTON</b>
	<b>FROM (inch)</b>	<b>TO (inch)</b>	
DEL-166131	1.660	1.315	50
DEL-190131	1.900	1.315	25
DEL-190166	1.900	1.660	25
DEL-237166	2.375	1.660	25
DEL-237190	2.375	1.900	25

**DOUBLE E-LOC & DOUBLE E-LOC TRANSITION COUPLINGS**

# E-LOC TRANSITION FITTINGS & DOUBLE E-LOC TRANSITION FITTINGS



## APPLICATIONS

- E-Loc and Double E-Loc transition fittings provide a threaded transition between any IPS tapered threaded rigid pipe and HDPE or a male solvent weld transition between PVC and HDPE pipe.
- One side of the transition fitting is a compression coupling and the other side is either a glued or threaded coupling allowing for a watertight connection of dissimilar material.

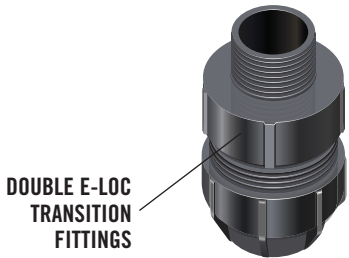
## PRODUCT DETAILS

### E-LOC TRANSITION FITTINGS

- HDPE to threaded rigid pipe
- HDPE to solvent welded connection
- HDPE to PVC
- Size ranging from 3/4" to 2"
- No additional tools required for installation

### DOUBLE E-LOC TRANSITION FITTINGS

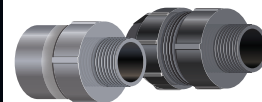
- Locking compression HDPE to rigid pipe
- Locking compression HDPE to solvent weld
- Size ranging from 1 1/4" to 2"
- No addition tools required for installation



Airtight Connections

Low Profile

Excellent Pull-Out Resistance



**CONDUIT  
ACCESSORIES**

**E-LOC TRANSITION FITTINGS**

<b>DESCRIPTIONS</b>		
<b>REFERENCE</b>	<b>NOMINAL SIZE (inch)</b>	<b>TYPE</b>
ELA-105-.750MPT	0.750	HDPE to any IPS threaded pipe
ELA-131-1.00MPT	1.000	HDPE to any IPS threaded pipe
ELA-166-1.25MPT	1.250	HDPE to any IPS threaded pipe
ELA-190-1.50MPT	1.500	HDPE to any IPS threaded pipe
ELA-237-2.00MPT	2.000	HDPE to any IPS threaded pipe
ELA-105-.750MSW	0.750	HDPE to PVC standard or bell end
ELA-131-1.00MSW	1.000	HDPE to PVC standard or bell end
ELA-166-1.25MSW	1.250	HDPE to PVC standard or bell end
ELA-190-1.50MSW	1.500	HDPE to PVC standard or bell end
ELA-237-2.00MSW	2.000	HDPE to PVC standard or bell end

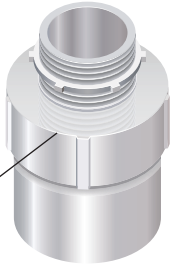
**DOUBLE E-LOC TRANSITION FITTINGS**

<b>DESCRIPTIONS</b>		
<b>REFERENCE</b>	<b>NOMINAL SIZE (inch)</b>	<b>TYPE</b>
DEL-166-1.25MPT	1.250	HDPE to any IPS threaded pipe
DEL-190-1.50MPT	1.500	HDPE to any IPS threaded pipe
DEL-237-2.00MPT	2.000	HDPE to any IPS threaded pipe
DEL-166-1.25MSW	1.250	HDPE to PVC standard or bell end
DEL-190-1.50MSW	1.500	HDPE to PVC standard or bell end
DEL-237-2.00MSW	2.000	HDPE to PVC standard or bell end

**E-LOC TRANSITION FITTINGS & DOUBLE E-LOC TRANSITION FITTINGS**

# E-LOC QUICK SEAL TERMINATION FITTINGS & DOUBLE E-LOC QUICK SEAL TERMINATION FITTINGS

E-LOC  
QUICK SEAL  
TERMINATION  
FITTINGS



---

## APPLICATIONS

---

- Quick Seal Terminations join HDPE to assorted cabinets or meter bases.
- Quick Seal Terminations incorporate E-Loc or Double E-Loc features to create a weather-resistant seal.

---

## PRODUCT DETAILS

---

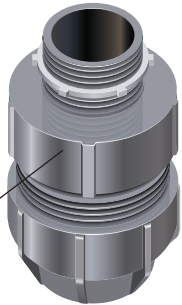
### E-LOC QUICK SEAL TERMINATION FITTINGS

- HDPE male termination
- Threaded lock-nut connection
- No additional tools required
- Available in 3/4" to 2 1/2"

### DOUBLE E-LOC QUICK SEAL TERMINATION FITTINGS

- Locking compression HDPE male termination
- Threaded lock-nut connection
- No additional tools required
- Available in 1 1/4" to 2"

DOUBLE E-LOC  
QUICK SEAL  
TERMINATION  
FITTINGS



---

Weather-Resistant Seal

---

HDPE

---

Threaded Lock-Nut  
Connection



**CONDUIT  
ACCESSORIES**

**E-LOC QUICK SEAL TERMINATION FITTINGS**

DESCRIPTIONS		
REFERENCE	NOMINAL SIZE (inch)	TYPE
ETA-105	0.750	HDPE terminal adaptor
ETA-131	1.000	HDPE terminal adaptor
ETA-166	1.250	HDPE terminal adaptor
ETA-190	1.500	HDPE terminal adaptor
ETA-237	2.000	HDPE terminal adaptor
ETA-287	2.500	HDPE terminal adaptor

**DOUBLE E-LOC QUICK SEAL TERMINATION FITTINGS**

DESCRIPTIONS		
REFERENCE	NOMINAL SIZE (inch)	TYPE
DETA-166	1.250	Locking compression HDPE terminal adaptor
DETA-190	1.500	Locking compression HDPE terminal adaptor
DETA-237	2.000	Locking compression HDPE terminal adaptor

E-LOC QUICK SEAL TERMINATION FITTINGS &  
DOUBLE E-LOC QUICK SEAL TERMINATION FITTINGS