

Construction

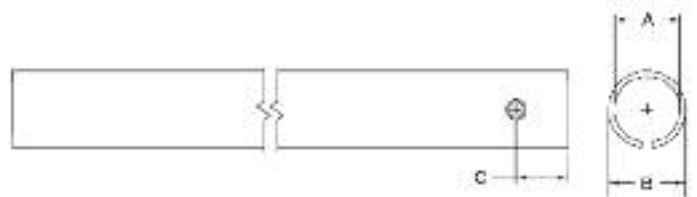
The Abrasion Protective Tubes are extruded from UV and track-resistant polyethylene. They are sized for the messenger or conductor size that they will be used on, and incorporate a hole on each end to use to tie the guard in position to prevent dislocation. They are available in black LDPE or grey HDPE.

Features

- UV and track-resistant
- Lightweight and shatter resistant
- Incorporates tie hole for securing to messenger
- Designed for specific messenger sizes
- Can be cut to length in the field
- Available in black or grey

Application

The Abrasion Protective Tubes are used to cover the messenger at a point on the Covered Aerial MV cable system where a conductor has been tapped or spliced. This prevents the likelihood that there will be phase to ground contact from animals, trees or other objects in the area of the exposed conductors.



Southwire Stock #	Description	Hendrix Cat #	Dimensions (in)			Length (in)	Weight (lbs)
			A	B	C		
64988601	Abrasion Protective Tube for 1 1/2" Diameter - Black	JUMBO LINE-DUC	1.5	1.64	1.0	96	0.18
64988701	Abrasion Protective Tube for 1" Diameter - Black	LINE-DUC	1.0	1.14	1.0	96	0.16
64678301	Abrasion Protective Tube for 1 1/2" Diameter - Grey	JUMBO LINE-DUC	1.5	1.64	1.0	96	0.18
64977801	Abrasion Protective Tube for 1" Diameter - Grey	LINE-DUC	1.0	1.14	1.0	96	0.16