

### Construction

The 15kV Spacer is injection molded from grey track-resistant high-density polyethylene. The 15kV Spacer is designed with two different cable attachment devices: Silicone Ring Ties for conductors and messengers or PREFORMED™ Messenger Ties (messenger only) to hold the cable in the spacer saddle.

### Features

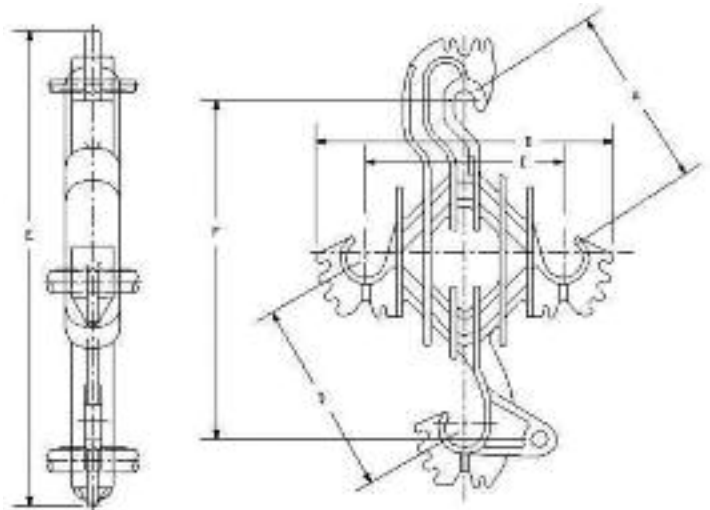
- Dielectrically compatible with Southwire polyethylene covered conductors or other polyethylene covered conductors
- 15kV Spacer is molded from grey high-density track-resistant polyethylene compound
- UV resistant
- Lightweight and shatter resistant
- Can be used on any 5kV - 15kV Covered Aerial MV system

### Application

The 15kV Spacer is used in 5kV - 15kV Covered Aerial MV systems to support the covered conductors. The 15kV Spacer was developed to meet the electrical, mechanical and environmental parameters typical of overhead distribution lines. The spacer is hung on the messenger and is used to support and space the phase conductors of the three-phase circuit.

### Specifications

ASTM D1248  
ASTM D2303



| Southwire Stock # | Description | Hendrix Cat. #. | Dimensions (in) |     |     |      |      |      |
|-------------------|-------------|-----------------|-----------------|-----|-----|------|------|------|
|                   |             |                 | A               | B   | C   | D    | E    | F    |
| 64987001          | 15kV Spacer | H-15D           | 6.5             | 6.9 | 6.9 | 10.0 | 15.3 | 11.8 |

| Southwire Stock # | Min. Leakage Distance (in) | Max. Messenger Diameter (in) | Max. Conductor Diameter (in) | Short Circuit Rating (kA) | Weight (lbs) |
|-------------------|----------------------------|------------------------------|------------------------------|---------------------------|--------------|
| 64987001          | 11.0                       | 0.65                         | 1.345                        | 13.5                      | 1.1          |